

LANDSCAPE MASTERPLAN

TLA SUBMISSION

14759.5-Arcadia East Estate-MP_A

ARCADIA EAST ESTATE

CSO Engineers

29 June 2023

CONTENTS

01

ANALYSIS

Study of the existing



Local Context

Local Analysis

Site Character

History & Heritage

Vegetation Communities

02

VISION

Study of the proposed



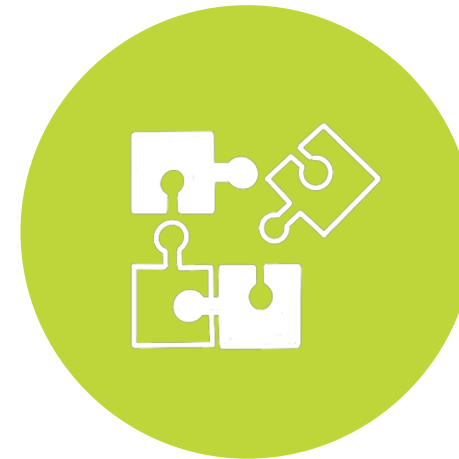
Landscape Vision

Materials

03

MASTERPLAN

We have a plan



Landscape Masterplan

Burkes Gully Riparian Corridor

District Park

04

STRATEGIES

Study of plan



Circulation

Furniture

WSUD & Hydrology

Proposed Tree Canopy

Planting Palette

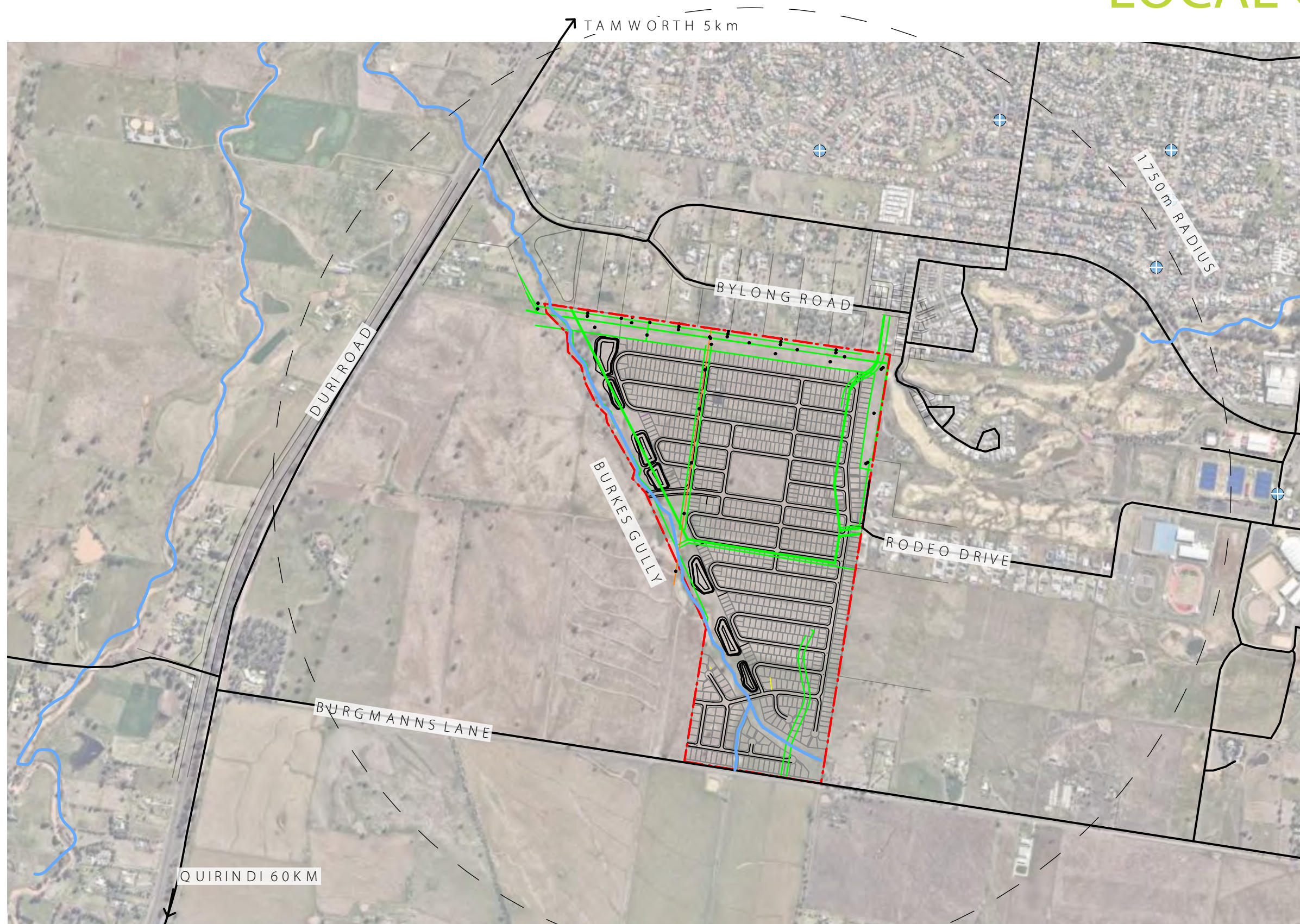
Plant Schedule

Connection to Country

Acknowledgement of Country

Terras acknowledge the Traditional Custodians of the lands on which we work and live. We pay our respects to the elders, past, present and emerging and recognise their continuing connection to country and contribution to this land.

LOCAL CONTEXT



LEGEND

	SITE BOUNDARY
	MAJOR ROAD
	MINOR ROAD
	EXISTING BUS STOP
	BURKES GULLY CREEK LINE
	OVERHEAD ELECTRICAL LINES, REFER CIVIL

SITE ANALYSIS

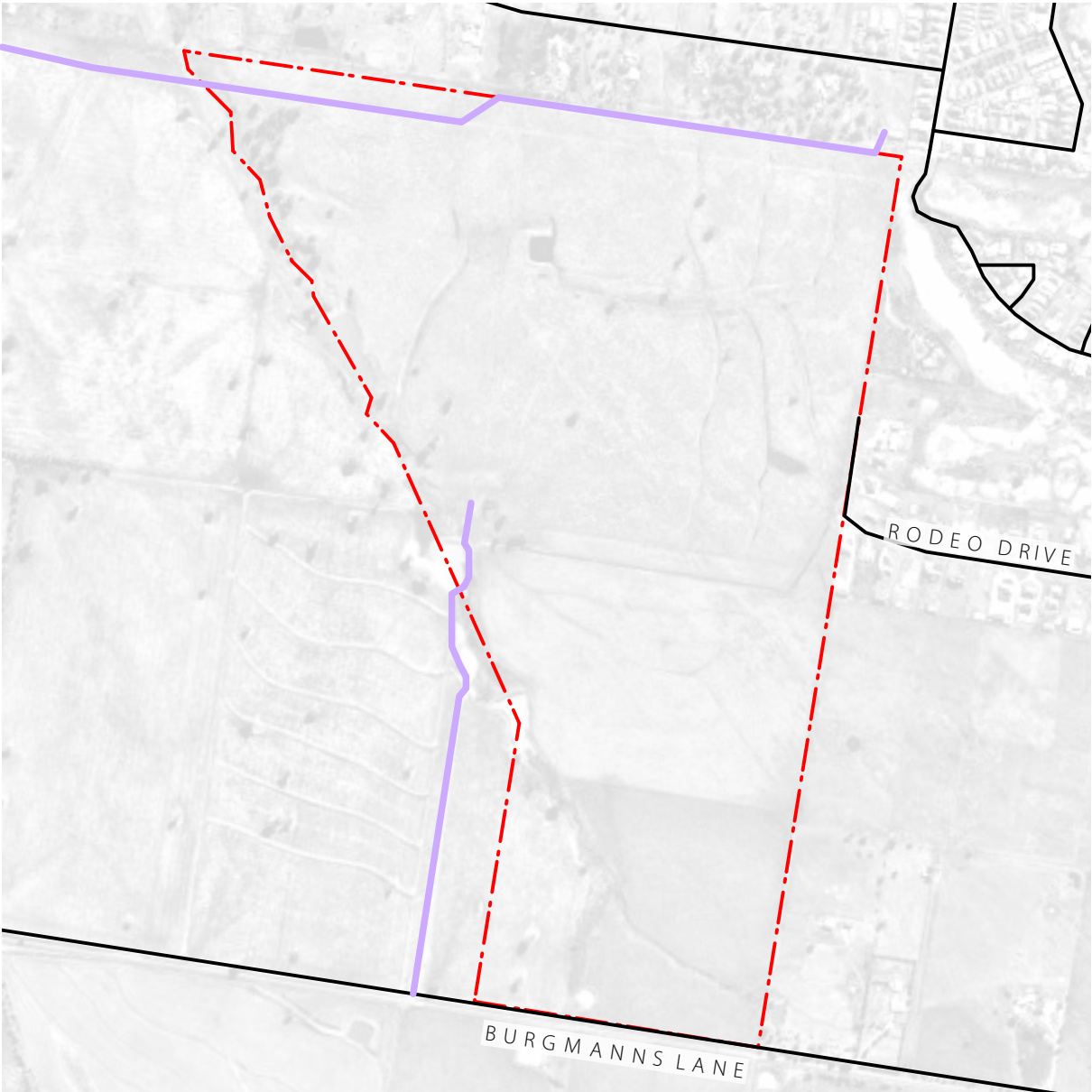
The site is located approximately 5km south of Tamworth CBD and 60km north of Quirindi CBD. It is bordered to the west by Burkes Gully and the proposed Arcadia Estate (subject to DA approval) and to the east by existing residential, recreation, and small primary production lots.

The site can be seen as an extension of the proposed Arcadia subdivision to the west adjoining existing, Duri Road, and will include a connection point at the boundary over Burkes Gully.

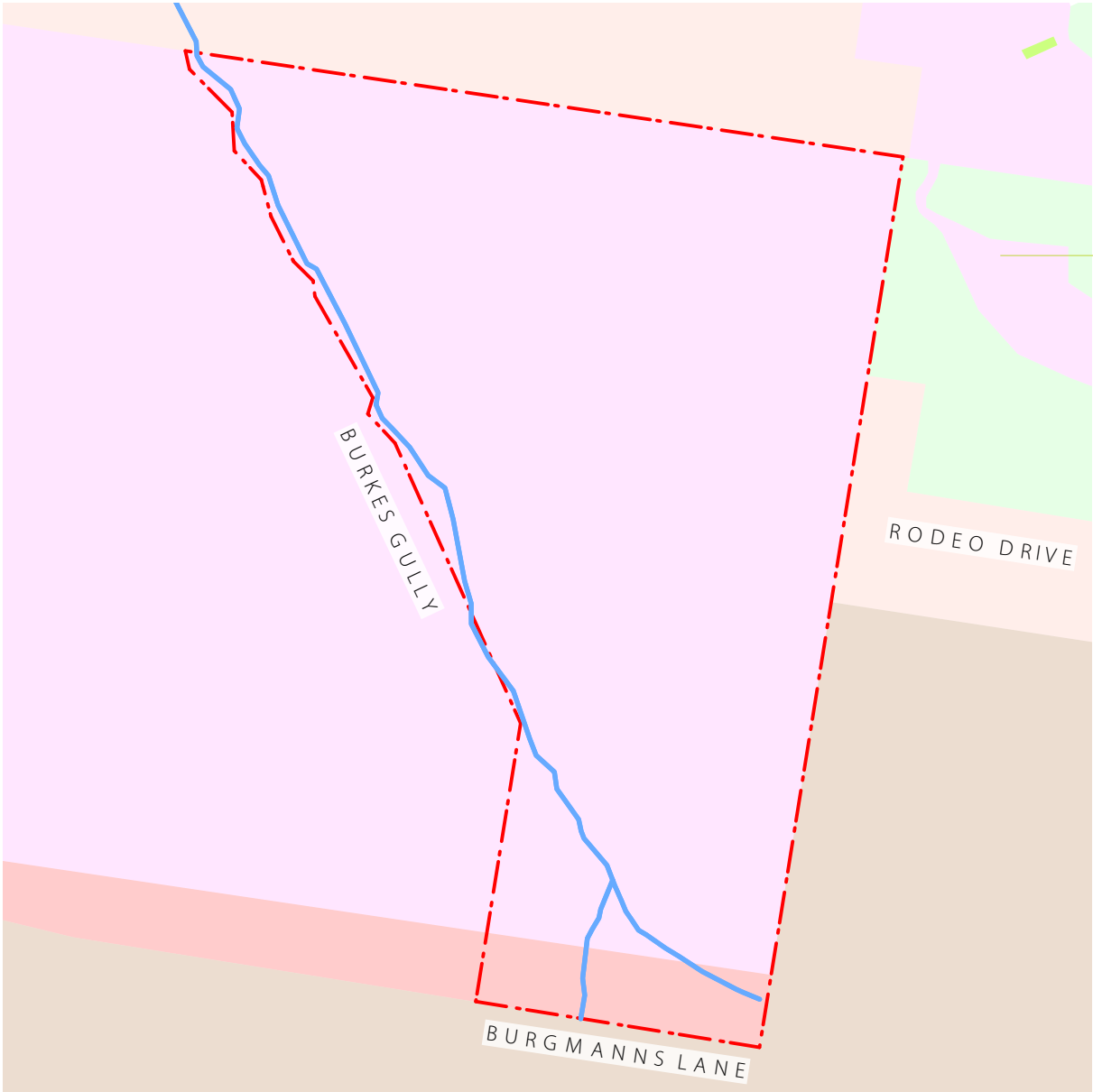
The site is bordered to the west by an existing riparian corridor, Burkes Gully, and is located in a developing residential area.



LOCAL ANALYSIS



EXISTING CIRCULATION



ZONING / SPATIAL TYPES



NOTES

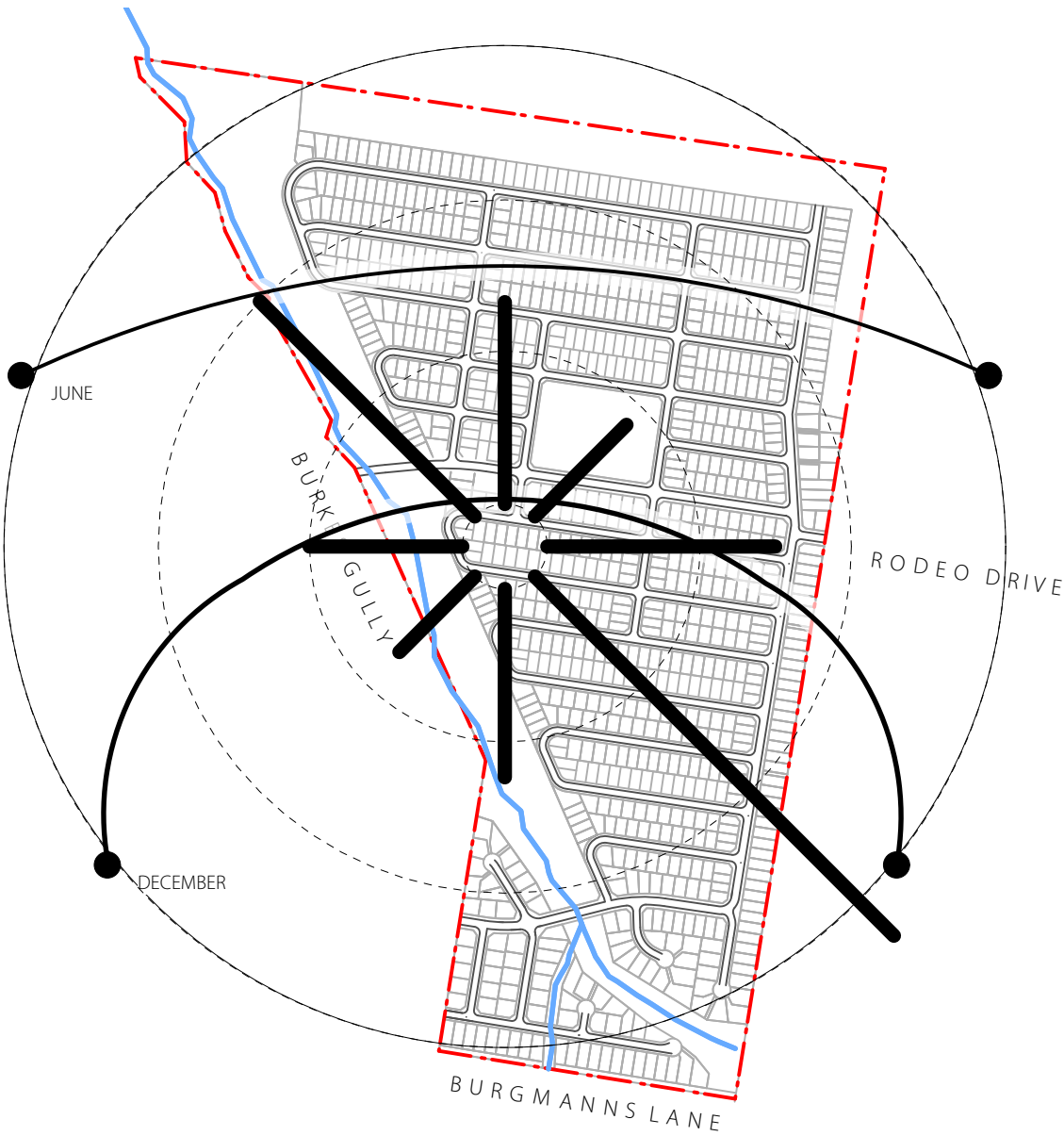
Existing circulation within site is limited to existing lots and due to the site being used for agricultural purposes.

The land is categorised by large span zoning of R1 - General Residential with the southern extent of the boundary, zoned R2 - Low Density Residential.

The surrounding zoning character can be described to a large extent, mixed residential, with southern extents of the site remaining small, primary production lots.



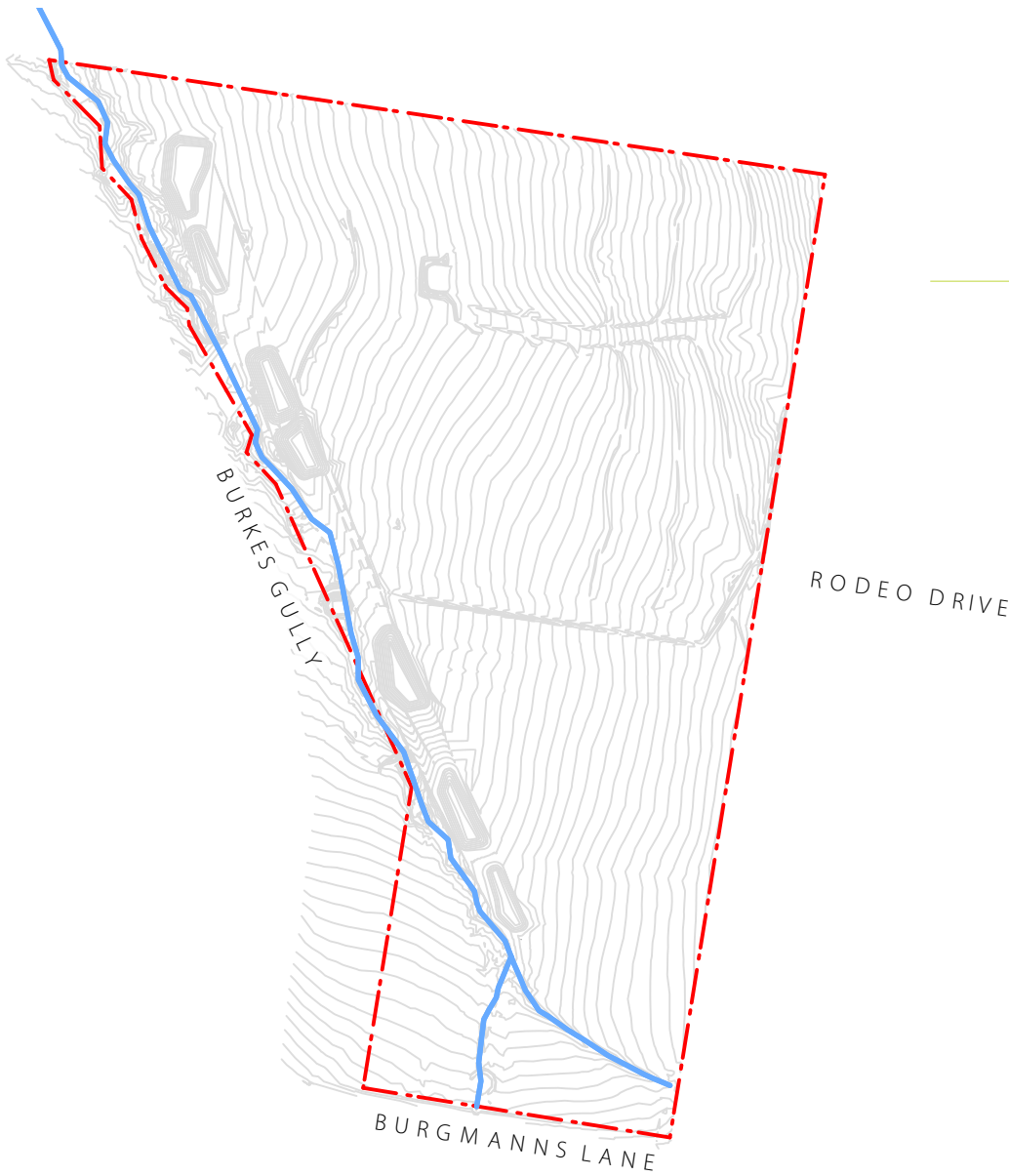
LOCAL ANALYSIS



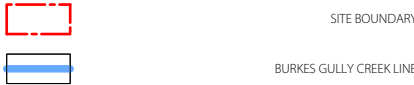
NATURAL SYSTEMS



Wind rose 9am Tamworth Airport (http://www.bom.gov.au/cgi-bin/Climate/cgi_bin/scripts/windrose_selector.cgi?period=Annual&type=9&location=55054)



TOPOGRAPHY



NOTES

- Wind of the Tamworth Region can be largely categorised by its south-eastern and north-western direction.
- Sun calculations demonstrate a low sun angle with shorter days in Winter, making north-eastern to north-western sun access vital during this time. Summer sun is dictated by a higher sun angle with longer days.
- The land has a minor slope towards Burkes Gully which spans the entire length of the western boundary of site.



SITE CHARACTER

NOTES

The proposed site has prime backdrops of eastern, national parks with Burkes Gully in the foreground.

The surrounding land is characteristic of a rural landscape amongst slightly undulating landform and scattered trees.

The current site is largely rural in nature, with scattered and slashed pasture grass, largely of an exotic species.

The site adjoins the proposed Arcadia Estate (subject to Council approval) and will be accessible via a proposed road through Burkes Gully from existing, Duri Road.



HISTORY & HERITAGE

ANCIENT AND GEOLOGICAL CONTEXT



The New England Region tells a story of rich geological history **dictated by intensive movement of volcanic activity.**

Sited on the The New England Fold Belt (NEFB), within the New England Orogen (NEO) , Tamworth's geology is defined by interactions of ancient oceans and volcanoes depositing a geological history of **mudstones, conglomerate, limestone, serpentinite and jasper.**

FIRST NATIONS PEOPLE



The Kamilaroi people, from whose language comes the word "budgerigar", inhabited the area before European contact.

The Kamilaroi typically spent their summer months **traveling along rivers** and plains gathering a variety of resources. In the winter months, movement was generally more restricted in temperate climates (Clarke 2007: 57). Semi-permanent encampments of wood and bark huts have been observed on the Liverpool plains and were possibly associated with summer life (O'Rourke as cited in Insite Heritage 2010: 24).

A variety of foods were available to Kamilaroi, due in part to the variety of landscapes and environmental conditions that could be exploited in the region and their semi-nomadic way of life.

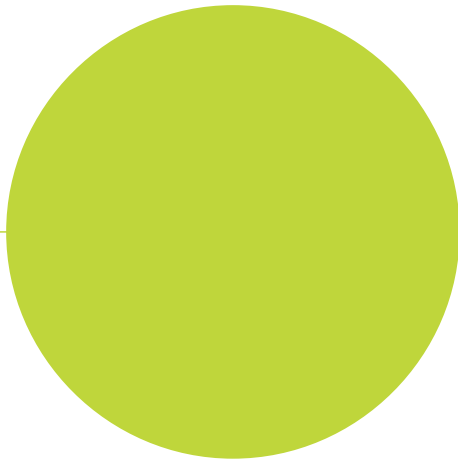
A variety of tools were needed for the extraction and manipulation of these resources. Many of these tools were made of stone. Scrapers, blades, axes, choppers, burins, adzes and more stone tool types were used by Aboriginal people in hunting, food preparation, wood working, carving and much more.

Several natural resources were observed within the study area. This included **Lomandra sedges** which have edible seed and leaf bases as well it the leaf blades being **used for basket weaving.**

Sample surveying was conducted in the riparian corridor of Burkes Gully and the rocky crests in the west of the study area. Aboriginal sites were recorded including artefact scatters, culturally modified trees (scarred) with artefacts, and a volcanic stone resource area in the northwest portion of Lot 1 DP795331, containing high quality (fine grained) **volcanic cobbles suitable for stone tool making.**

(Ref: Aboriginal cultural heritage assesment, Area 2023)

EUROPEAN OVERLAY



The region now known as Tamworth, was first visited by non-Aboriginal people in 1818 when the explorer John Oxley travelled through. He noted the valuable resources that were abundant in the region. In 1824 the Australian Agricultural Company was formed by an Act of the British Parliament and incorporated by Royal Charter. With the aim to produce fine merino wool for export to Great Britain, the Australia Agricultural Company was provided unoccupied lands by the crown for the purposes of "cultivation and improvement of wastelands in the colony of New South Wales and other purposes amongst which was **the production of fine merino wool** as an article of export to Great Britain" (Carey 2006).

By the 1830s, European settlement had spread to the Liverpool Plains south east of Tamworth for the purposes of **sheep and cattle grazing.** (OEH 2013). As the nineteenth century progressed, land use shifted toward more intensive agriculture. This resulted in widespread land clearing and erosion. This process of intensive agriculture by European settlers, along with aggression by the settlers towards Aboriginal people and the introduction of diseases, resulted in decline in the traditional Aboriginal use of the area from this time onward.

VEGETATION COMMUNITIES

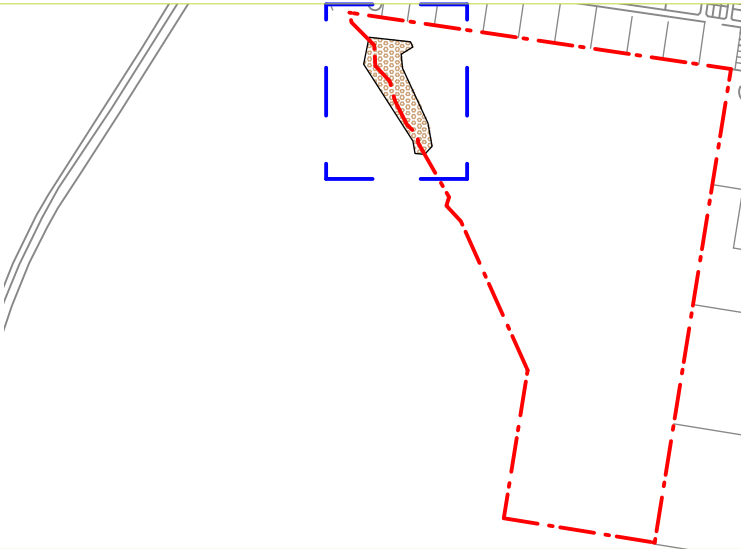


VEGETATION TYPE 1

Blakely's Red Gum Yellow Box Grassy Woodland (PCT: 599)

Overstorey is dominated by Blakely's red gum and/or yellow box with occasional white box and/or grey box (*E. moluccana*). This community comprises a mature age/old growth stand (ie mature trees/old growth with only one or two cohorts) with little or no regeneration present . This community constitutes the endangered ecological community, *White Box Yellow Box Blakely's Red Gum Woodland*, listed under the schedules of the NSW *TSC Act*. (The Envirofacter F&FA 2015)

Species present include, but are not limited to:
Canopy Species: Blakely's Red Gum, Yellow Box, White Box, Grey Box
Mid Stratum: African boxthorn (*Lycium ferocissimum*)
Ground-Stratum: Rye grass (*Lolium sp*)*, bromes (*Bromus spp*)*



LEGEND



SITE BOUNDARY

EXTENT OF PCT 599, REFER F&FA 2015



Blakely's Red Gum



White Box



Grey Box



LANDSCAPE VISION

CONNECTION TO COUNTRY



As a landscape architecture practice that deals with land, places, culture, history and the natural environment, everything we do is on Country and it is our responsibility to care for country. We are committed to understand more about the Traditional Owners of this land, and their deep cultural connections to Country. Our ambition is to:

- Reduce the impacts of natural events through sustainable land and water use practices
- Value and respect Aboriginal cultural knowledge and language and engage with truth
- Ensure Country is cared for appropriately and sensitive sites are protected

HUMAN CONNECTIONS



Provide legible and easily accessible links through the site at a human scale to encourage walking and cycling. Creating opportunities for active and passive recreation and a variety of recreation experiences.

The environments in which we live profoundly affect us. Positive relationships and connections to natural and built landscapes impact our health and well-being in a variety of ways. Including reducing stress and minimizing anxiety.

It is our intention to foster connections for the people to Live, Work, Play, Gather, and Learn.

CLIMATE POSITIVE DESIGN



As stewards of the environment, landscape architects must advocate for climate positive outcomes. As designers of the built environment we need to ensure the future of our planet by reducing carbon footprints and increasing sequestration. CPD can mean:

- Retention of as many trees on site as possible
- Reduce demolition and recycle and reuse materials
- Reduce the extent of high carbon elements
- Maximise soft surfaces and soil root plate volumes
- Increase biodiversity
- Design for longevity
- Utilise WSUD principles

SITE SPECIFIC DESIGN



Design which preserves, enhances, and creates strong visual and physical connections to the natural features inherent to the site, whether they are a stand of trees, the topography of a site, a body of water, or a distant view.

LANDSCAPE VISION

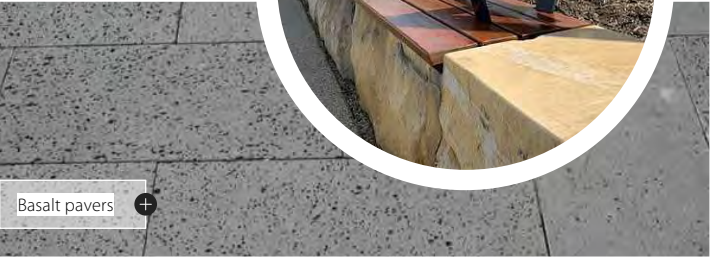
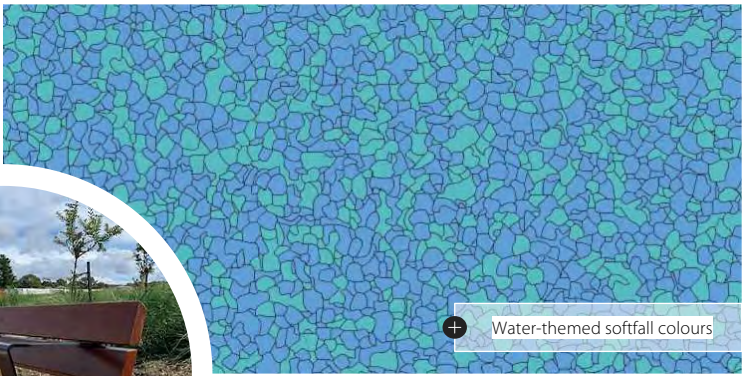
To reconnect people to the land through thoughtful design considerations referencing history and heritage and to promote the exploration of open space and meandering discovery and its relationship to the existing water course of Burkes Gully.

MATERIALS

NOTES

The proposed material palette is inspired by the history and heritage of the site

Planting of endemic vegetation will help to create a sense of place unique to the site with swathes of Lomandra sedges proposed to reinforce movement and the site's relationship to water.



LANDSCAPE MASTERPLAN



MASTERPLAN



LEGEND

	SITE BOUNDARY
	BURKES GULLY CREEK LINE
	EXISTING VEGETATION COMMUNITY: MODERATE WOODLAND TO BE PROTECTED & RETAINED. (REFER BIO. REPORT)
	ELECTRICITY EASEMENTS
	MANAGED GRASSLAND
	PROPOSED TREE PLANTINGS AS SPECIFIED
	NEW RIPARIAN TREE ZONE (REFER DETAIL FOR OFFSET)
	NEW RIPARIAN VEGETATION
	BASIN MASS PLANTING MIX 1 (MP1) WITH TREES TO SURROUND
	BASIN BOTTOM MASS PLANTING MIX (MP2)
	ROAD
	TURF AREA
	MASS PLANTING
	SAND
	CONCRETE
	SHAREPATH

NOTES

1. Entry point from west Arcadia
2. Managed grassland under electrical easements
3. Vegetation community PCT 599 as per Ecologists report
4. Burkes Gully
5. Detention basins
6. District path
7. Riparian offset as per NSW NRAR Guidelines. Refer Burkes Gully Details
8. 2.5m sharepath to edge of development, with 1.2m footpath connection to west Arcadia development
9. Nodes along sharepath edge with shelter, picnic and BBQ facilities. Refer Burkes Gully Nodes Detail



BURKES GULLY DETAIL 01



Meandering pathway with connection points to west Arcadia

Existing overhead electrical lines

Avoid and minimise disturbance where possible to retain and protect Blakely's Red Gum Grassy Woodland community

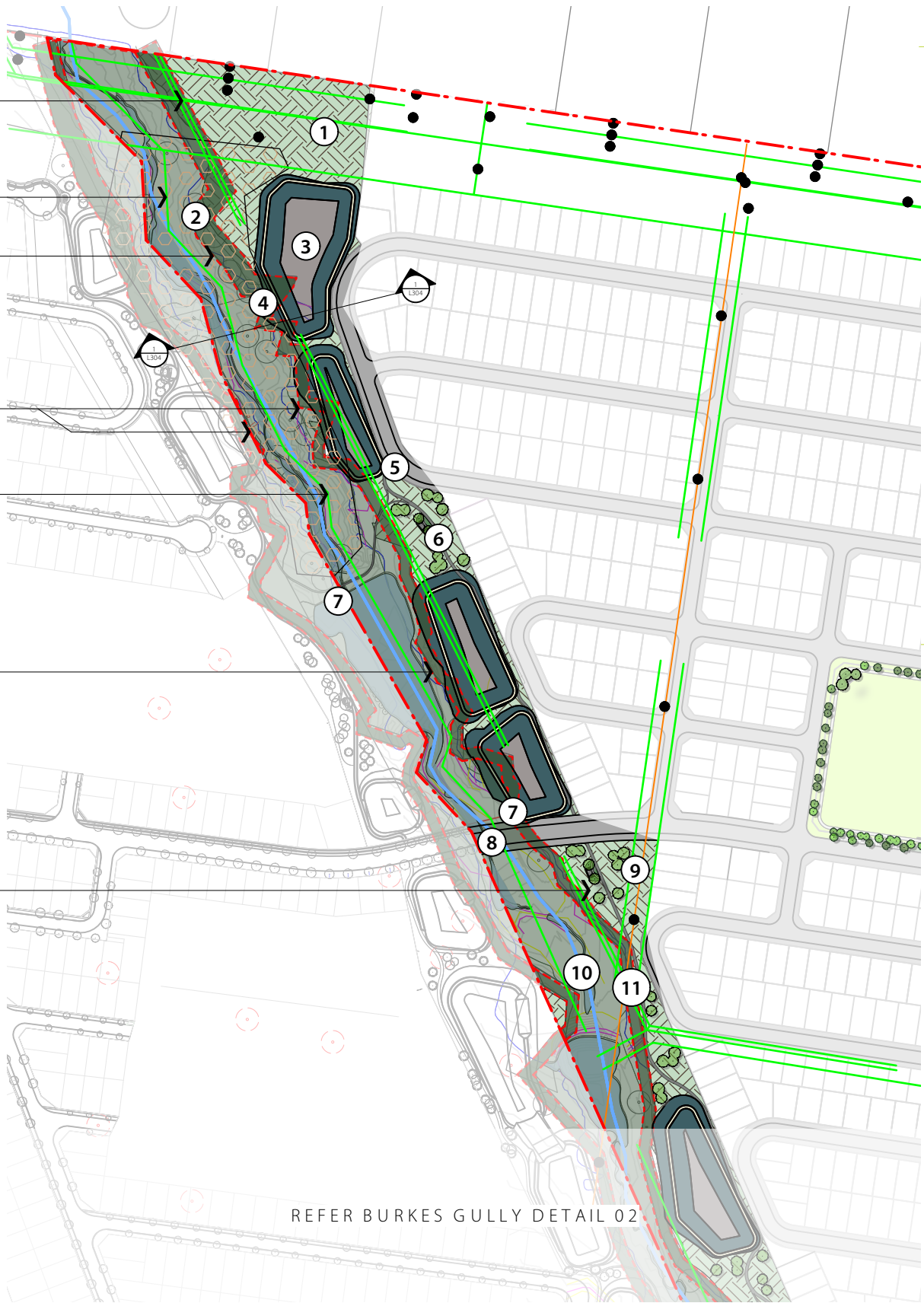
20m Riparian offset

Top of bank

Revegetation to include species from Blakely's Red Gum Grassy Woodland community

10m Riparian offset

Managed grassland



LEGEND

- SITE BOUNDARY
- BURKES GULLY CREEK LINE
- EXISTING VEGETATION COMMUNITY: MODERATE WOODLAND TO BE PROTECTED & RETAINED, (REFER BIO. REPORT)
- ELECTRICITY EASEMENTS
- MANAGED GRASSLAND
- PROPOSED TREE PLANTINGS AS SPECIFIED
- NEW RIPARIAN TREE ZONE (REFER DETAIL FOR OFFSET)
- NEW RIPARIAN VEGETATION
- BASIN MASS PLANTING MIX 1 (MP1) WITH TREES TO SURROUND
- BASIN BOTTOM MASS PLANTING MIX (MP2)
- ROAD
- TURF AREA
- MASS PLANTING
- SAND
- CONCRETE
- SHAREPATH

NOTES

1. Canopy planting with managed grassland. To comply with overhead electrical requirements
2. Vegetation Zone 1 - Existing low, derived woodland to be retained where located outside the proposal footprint
3. Vegetated detention basin
4. Transition zone of 10 and 20m riparian offset
5. Pedestrian footpath linkage to shareway and riparian zone from street network
6. Proposed seating nodes. Refer Nodes detail
7. Indicative pedestrian linkage to future development (Outside the scope of this DA)
8. Proposed connection to future development
9. Open turf area for recreation
10. Retained water channel (Burkes Gully) with vegetated riparian zone
11. 2.5m wide shareway provides a western edge to riparian zone

1 BURKES GULLY DETAIL 01
Scale: 1:5000

REFER BURKES GULLY DETAIL 02



BURKES GULLY DETAIL 02



Meandering pathway with connection points to west Arcadia

Revegetation to include species from Blakely's Red Gum Grassy Woodland community

Managed grassland

Top of bank

10m Riparian offset

Overhead electrical lines

REFER BURKES GULLY DETAIL 01

LEGEND

- SITE BOUNDARY
- BURKES GULLY CREEK LINE
- EXISTING VEGETATION COMMUNITY: MODERATE WOODLAND TO BE PROTECTED & RETAINED. (REFER BIO. REPORT)
- ELECTRICITY EASEMENTS
- MANAGED GRASSLAND
- PROPOSED TREE PLANTINGS AS SPECIFIED
- NEW RIPARIAN TREE ZONE (REFER DETAIL FOR OFFSET)
- NEW RIPARIAN VEGETATION
- BASIN MASS PLANTING MIX 1 (MP1) WITH TREES TO SURROUND
- BASIN BOTTOM MASS PLANTING MIX (MP2)
- ROAD
- TURF AREA
- MASS PLANTING
- SAND
- CONCRETE
- SHAREPATH

NOTES

- 2500 wide shareway providing a western edge to riparian zone
- Vegetated detention basin
- Proposed seating nodes. Refer Nodes Detail
- Canopy planting with managed grassland
- Retained water channel (Burkes Gully) with new vegetated riparian zone
- Indicative linkage to future development (Outside the scope of this DA)
- Indicative pedestrian linkage to future development (Outside the scope of this DA)
- Pedestrian footpath linkage from street network

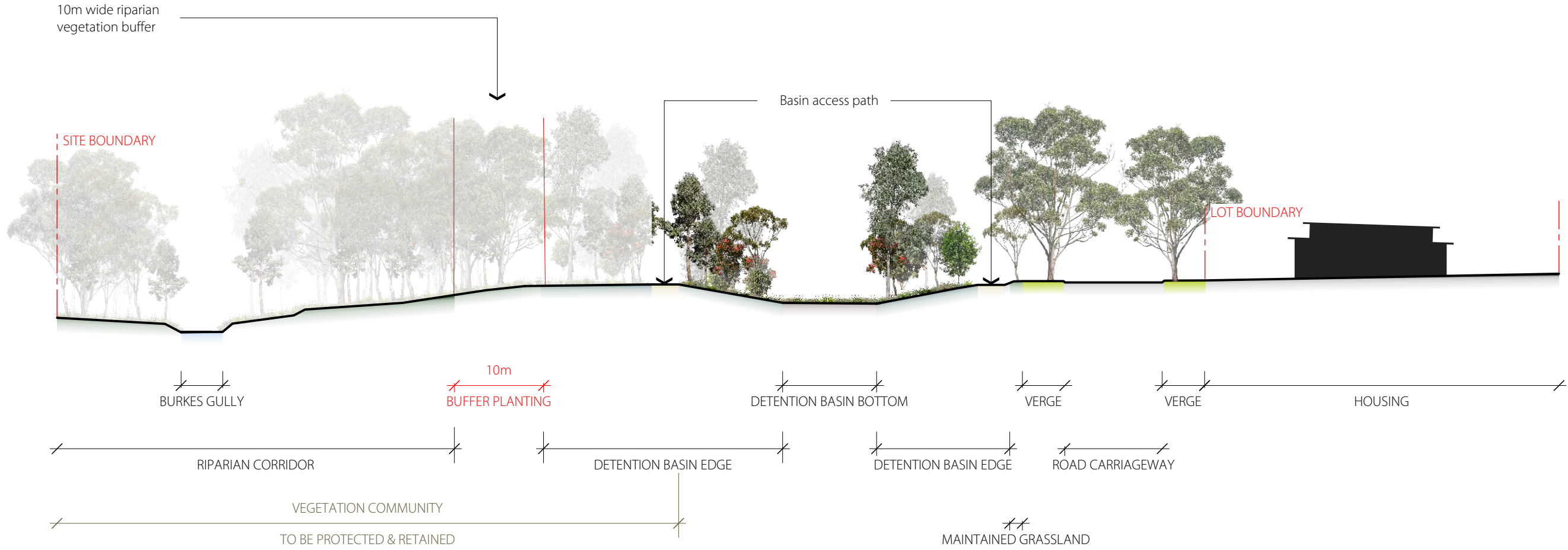
1 BURKES GULLY DETAIL 02
Scale: 1:5000



BURKES GULLY ELEVATION



Blakely's Red Gum Grassy Woodland community to be protected and retained



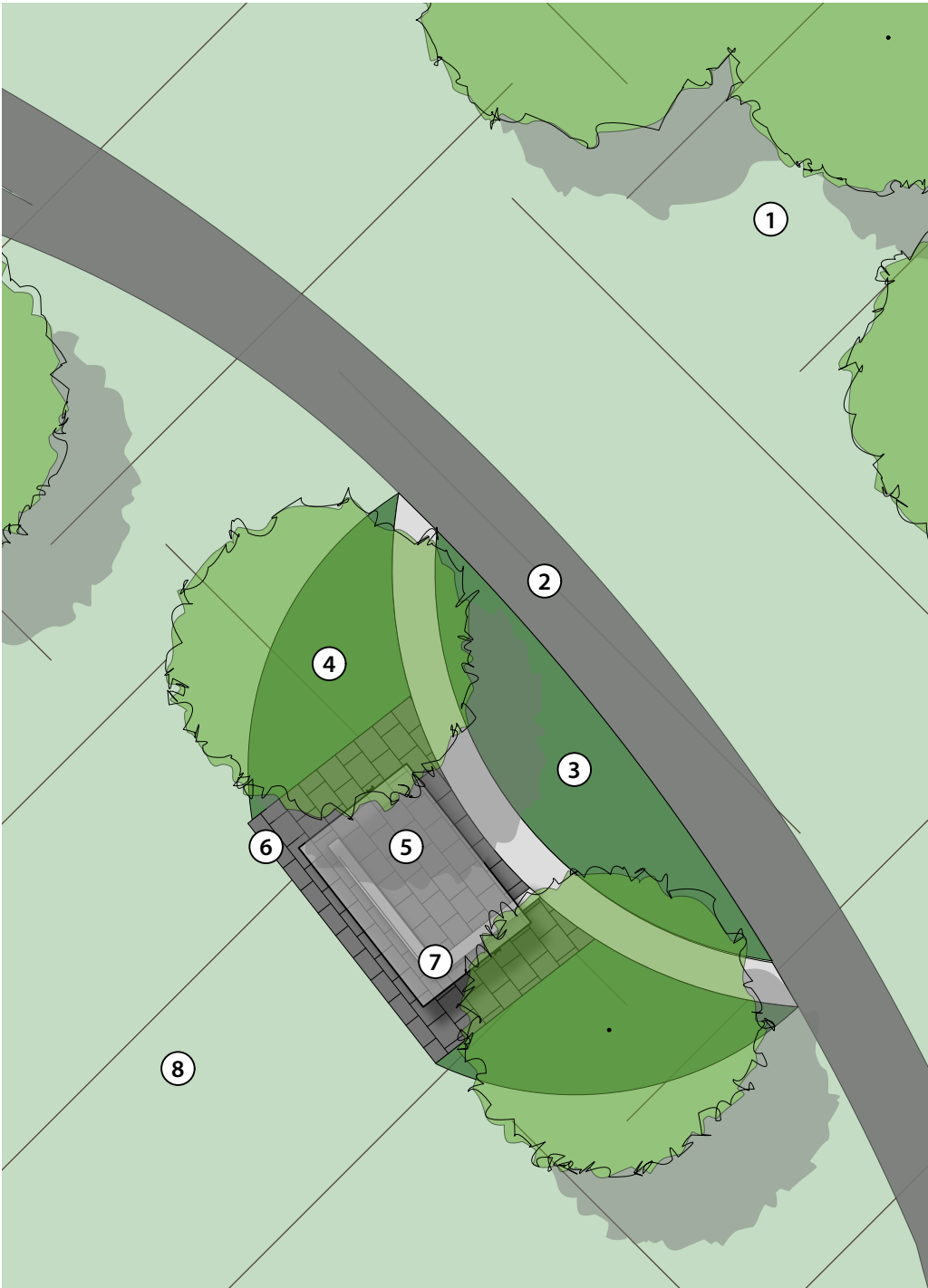
1 BURKES GULLY ELEVATION DETAIL
L304 Scale: 1:500



BURKES GULLY NODES



Meandering pathway with connection points to west Arcadia



1 NODES DETAIL
L307 Scale: 1:200



LEGEND

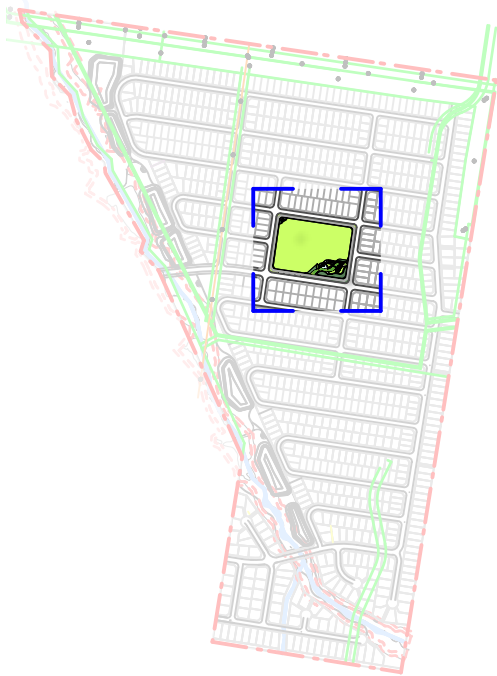
- SITE BOUNDARY
- PROPOSED TREE PLANTINGS AS SPECIFIED
- TURF AREA
- MASS PLANTING
- BASALT PAVERS
- CONCRETE

NOTES

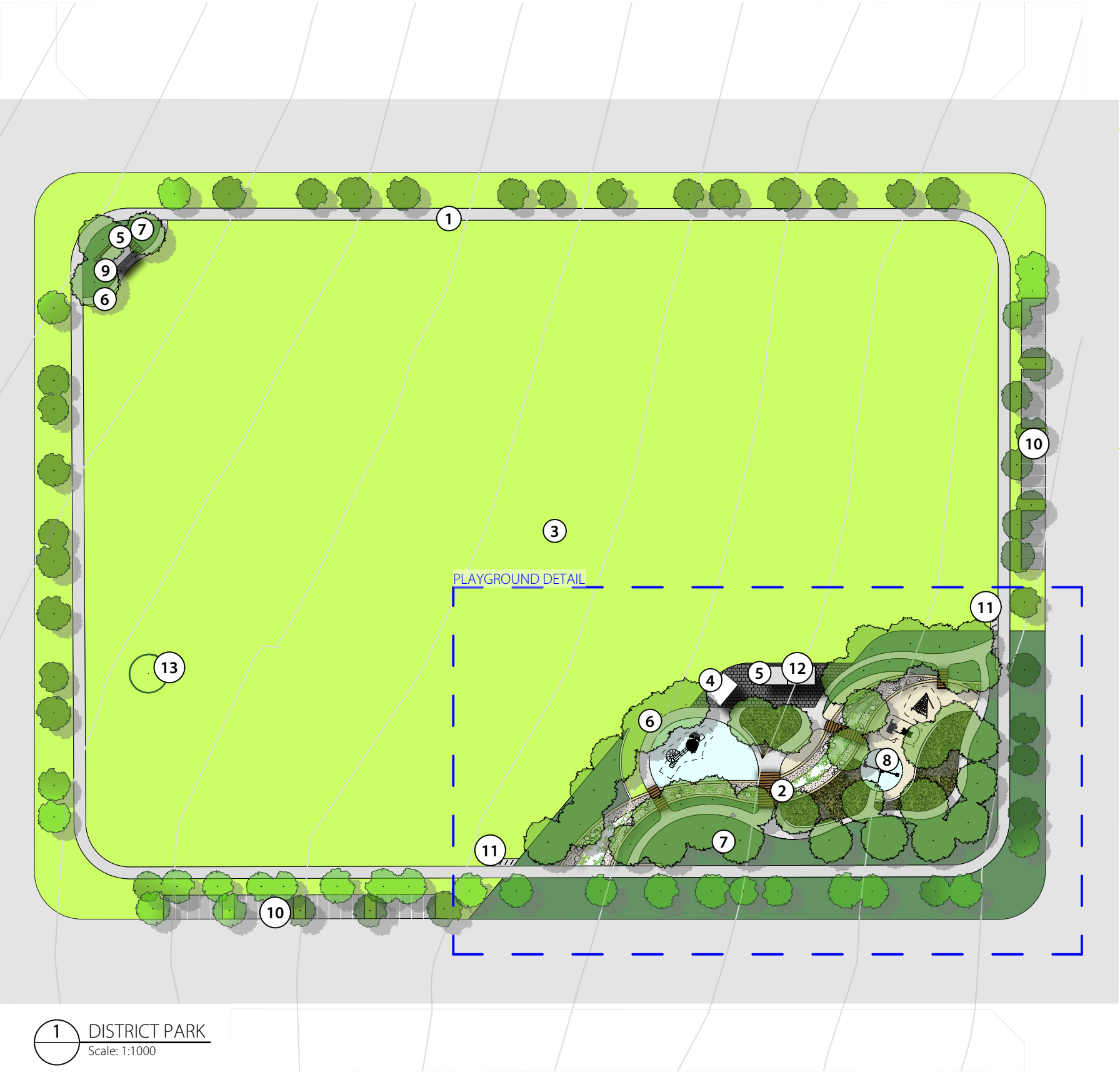
1. Canopy planting with managed grassland. To comply with overhead electrical requirements
2. 2500m shareway to Burkes Gully edge
3. Mass planting to shareway edge to provide buffer and create a sense of privacy
4. Mass planting, tree to provide natural shade
5. Landmark 6 x 4m shelter with picnic setting, rubbish bins and BBQ facilities
6. Basalt pavers as indigenous reference to artefacts found on site
7. In-situ concrete wall as informal seating and viewing point to Burkes Gully
8. Open, managed grassland to retain views towards Burkes Gully



DISTRICT PARK



Organic, discovery-style playground with equipment and materials referencing the heritage and history of Burkes Gully and the surrounding region



1 DISTRICT PARK
Scale: 1:1000

LEGEND

- SITE BOUNDARY
- PROPOSED TREE PLANTINGS AS SPECIFIED
- TURF AREA
- MASS PLANTING
- CONCRETE
- BASALT PAVERS
- WATER THEMED SOFTFALL
- SAND
- SANDSTONE WALL

NOTES

1. Sharepath to District park edge
2. Formal recreation area. Refer Playground Detail
3. Open turf area for informal recreation
4. Amenities building
5. Rubbish bins
6. Natural shade provided by trees
7. Garden beds with endemic planting, to be irrigated
8. Play equipment for all ages
9. 6 x 4m Landmark shelter for extra shade coverage with picnic tables, benches and BBQ facilities
10. Limited parking areas
11. Bicycle racks beside sharepath
12. Two 6 x 4m Landmark shelter for extra shade coverage with picnic tables, benches and BBQ facilities
13. Existing tree to be retained

All park requirements as per Tamworth Regional Council 'Open Space Management Guide'

Refer civil for information regarding access to bore water



PLAYGROUND DETAIL



1 PLAYGROUND DETAIL
Scale: 1:500



LEGEND

- SITE BOUNDARY
- PROPOSED TREE PLANTINGS AS SPECIFIED
- TURF AREA
- MASS PLANTING
- CONCRETE
- BASALT PAVERS
- WATER THEMED SOFTFALL
- SAND
- SANDSTONE WALL

NOTES

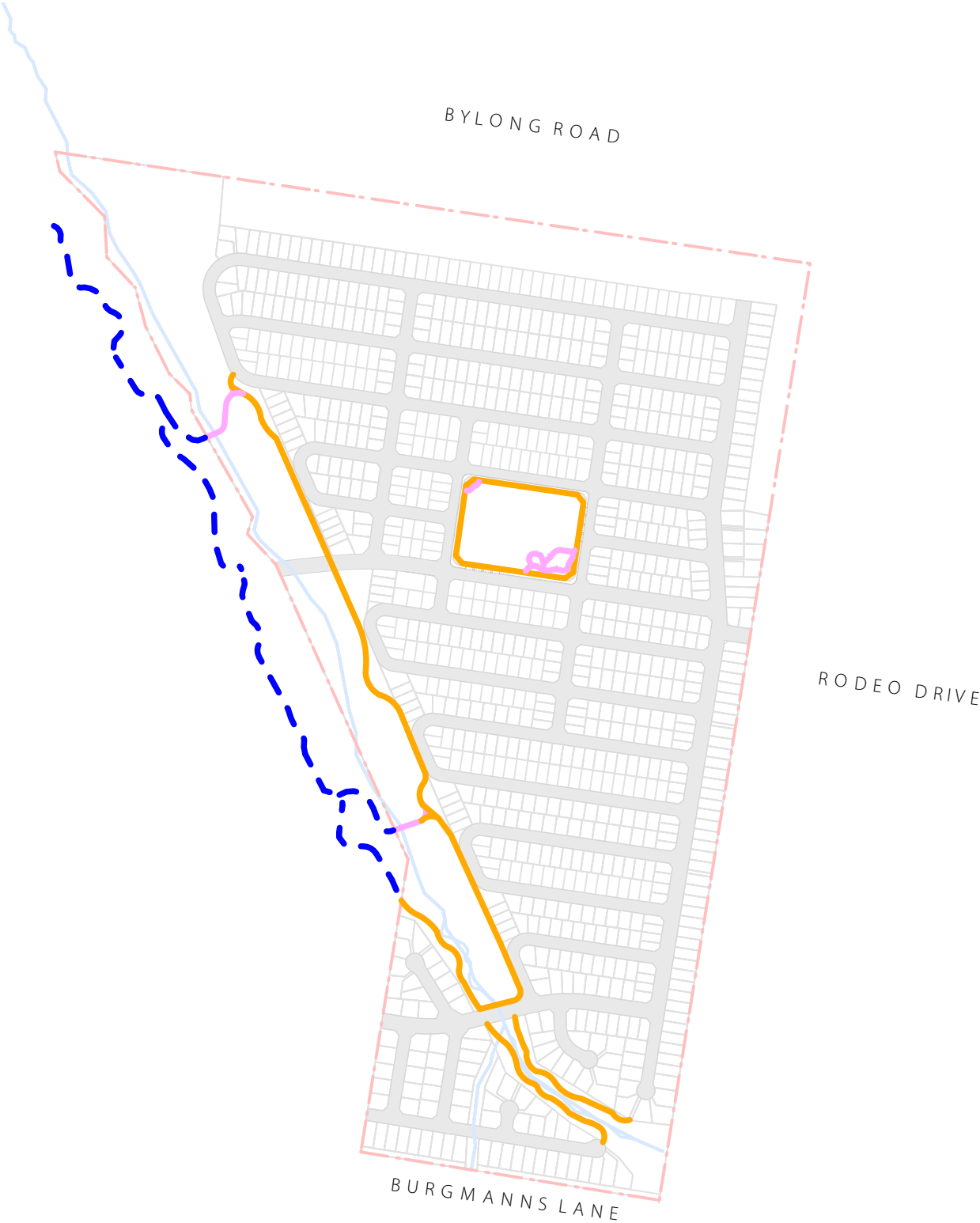
- Amenities building
- Rubbish bins
- Picnic tables and benches under two 6 x 4m Landmark shelters with BBQ facilities
- Water bubbler
- Basalt pavers as reference to local indigenous artefacts
- Natural shade provided by trees to play equipment
- Connection to open turf area
- In-situ concrete wall for informal seating and observation
- The Playground Centre 'Round Tower' play structure to represent a grain silo and the agricultural history of the area
- Water-themed softfall to playground base
- The Playground Centre 'Trampoline Pi' in ground trampolines as active all age play equipment
- Dry creek bed with local, limestone boulders. To be planted with endemic and native mass planting sedges as reference to indigenous connection to Burkes Gully
- Timber bridge over interactive, discovery play, dry creek bed
- Sand as natural, discovery playground feature
- Partially in-ground, sandstone logs as edge to dry creek bed and informal seating
- Serpentine concrete path to slow pedestrian activity makes reference to Burkes Gully
- The Playground Centre 'Nature's Recluse' play structure as discovery garden playground equipment for all ages
- The Playground Centre 'Sand Play Module 220' play structure as sensory play feature for all ages
- The Playground Centre 'Bimbo Basket Swing' for all-age and ability play
- Turf with scattered trees as monitored free play/informal picnic area
- Endemic and native mass planting with trees to provide shade
- Sharepath to District Park edge
- Sandstone wall feature signage to park entry
- Bike racks beside sharepath
- Mass planting to kerb edge with street trees as per Tamworth Regional Council Preferred Street Tree list




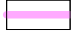



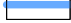
LANDSCAPE STRATEGIES



CIRCULATION



LEGEND

-  SITE BOUNDARY
-  1.5m FOOTPATH
-  2.5m SHAREWAY
-  PROPOSED ROAD
-  2.5m SHAREWAY & FOOTPATHS, BY OTHERS
-  BURKES GULLY CREEK LINE



FURNITURE



LEGEND

 SITE BOUNDARY

NOTES

1. District Park (3ha) to include:
 - Limited parking areas
 - Amenities block
 - Rubbish Bins and bubbler
 - Park furniture including picnic settings, benches and BBQ facilities
 - Shade structures
 - Irrigation
 - Informal sandstone log/in-situ wall seating
 - Variable play equipment
 - Sharepath to park edge

All park requirements as per Tamworth Regional Council 'Open Space Management Guide'

2. Burkes Gully Recreation Nodes to include:
 - Rubbish Bins
 - Park furniture including picnic settings, benches and BBQ facilities
 - Shade structures
 - Informal sandstone log/in-situ wall seating
 - Sharepath to node edge



WSUD AND HYDROLOGY



LEGEND



SITE BOUNDARY



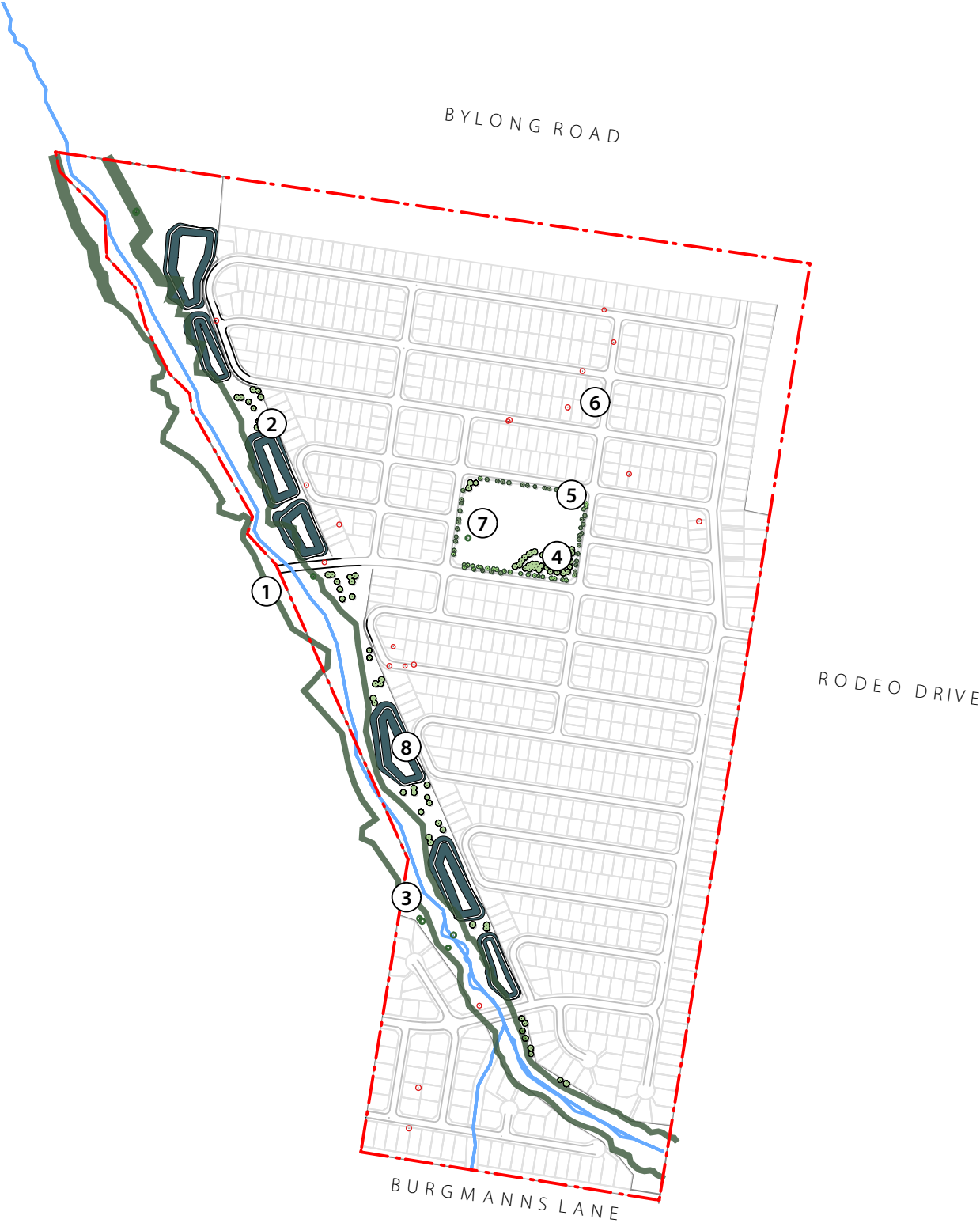
BASIN



BURKES GULLY CREEK LINE



PROPOSED TREE CANOPY



LEGEND

- EXISTING TREES TO BE REMOVED
- EXISTING TREES TO BE RETAINED
- PROPOSED NEW TREE
- BASIN MASS PLANTING MIX 1 (MP1) WITH TREES TO SURROUND

NOTES

- Burkes Gully riparian tree planting. Refer Burkes Gully Details and Plant Schedule
- Scattered planting of canopy trees over maintained grassland to enable clear views beneath canopy to the west while providing habitat and screening the development from surrounding areas. To be planted to avoid overhead power lines
- Trees to be retained
- Feature canopy trees to playground recreational area
- Street trees to District Park edge to provide shade
- Trees to be removed
- Tree to be retained in District Park. Refer Park Detail
- Trees to basin edge



PLANT PALETTE

TREES, SHRUBS & GROUNDCOVERS - PARK



Corymbia maculata (E)



Eucalyptus blakelyi



Brachychiton populus



Dichondra repens 'Silver Falls'



Pennisetum setaceum 'Rubrum'

RIPARIAN CORRIDOR



Eucalyptus albens



Eucalyptus blakelyi



Rytidosperma caespitosum



Lomandra longifolia 'Tanika'



Poa sieberiana

BASINS



Corymbia maculata



Tristaniopsis laurina



Gahnia clarkei



Ficinia nodosa



Themeda australis

(E) Endemic to site (F) Edible/Bush tucker component



PLANT SCHEDULE

PLANT SCHEDULE - TREES

BURKES GULLY RIPARIAN CORRIDOR				
ID	Botanical Name	Common Name	Scheduled Size	Pot Size
EuBl	Eucalyptus blakelyi	Blakely6 Red Gum	25.0 x 20.0	75L
EuMe	Eucalyptus melliodora	Yellow Box, Honey Box	30.0 x 25.0	75L
EuBr	Eucalyptus bridgesiana	Apple Box	20.0 x 20.0	75L
EuPoSu	Eucalyptus polyanthemos	Red Box	25.0 x 15.0	75L
EuMa-1	Eucalyptus macrorhyncha	Red Stringybark	35.0 x 20.0	75L
EuMo	Eucalyptus moluccana	Grey Box	25.0 x 20.0	75L
EuRuSu	Eucalyptus rubida	Ribbon Gum, Candlebark	30.0 x 15.0	75L
EuGo	Eucalyptus goniocalyx	Mountain gum	20.0 x 15.0	75L
CoMac	Corymbia maculata	Spotted Gum	20.0 x 10.0	75L
EuTe	Eucalyptus tereticornis	Forest Red Gum, Burringoa	35.0 x 12.0	75L
EuAl	Eucalyptus albens	White Box	25.0 x 20.0	75L
DISTRICT PARK				
ID	Botanical Name	Common Name	Scheduled Size	Pot Size
EuAl	Eucalyptus albens	White Box	25.0 x 20.0	75L
CoMac	Corymbia maculata	Spotted Gum	20.0 x 10.0	75L
BrPo	Brachychiton populneus	Bottle Tree	10.0 x 6.0	75L
BASINS				
ID	Botanical Name	Common Name	Scheduled Size	Pot Size
CC-1	Corymbia citriodora	Lemon-Scented Gum	35.0 x 25.0	75L
CorFic	Corymbia ficifolia	red flowering gum	7.0 x 5.0	75L
EuPu	Eucalyptus punctata	Grey Gum	35.0 x 15.0	75L
MeLi	Melaleuca linearifolia	Flax-leaved Paperbark, Budjur (Gadigal), Snow-in-summer	10.0 x 4.0	75L
TrLau	Tristaniopsis laurina	Water Gum	10.0 x 6.0	75L
CoMac	Corymbia maculata	Spotted Gum	20.0 x 10.0	75L

PLANT SCHEDULE - UNDERPLANTING

BURKES GULLY RIPARIAN CORRIDOR				
ID	Botanical Name	Common Name	Scheduled Size	Pot Size
CaAp	Carex appressa	Tall Sedge	1.0 x 1.0	50mm Tube
FiNo	Ficinia nodosa	knobby club-rush		
PoLa	Poa labillardieri	Tussock Grass	1.0 x 1.0	140mm
ThAu	Themeda australis/triandra	Kangaroo Grass	1.0 x 0.5	140mm
LoLo	Lomandra longifolia	Spiny-headed Mat-Rush	1.0 x 1.0	50mm Tube
GaCl	Gahnia clarkei	Saw Sedge	1.0 x 1.5	Viotube
PoSi	Poa sieberiana	Grey tussock Grass	1.0 x 1.0	140mm
GoPi	Goodenia pinnatifida	Scrambled eggs	0.4 x 1.0	50mm Tube
JuUs	Juncus usitatus	Common Rush	1.2 x 0.5	50mm Tube
JuCo	Juncus continuus	Common Rush	1.0 x 1.0	50mm Tube
Rhspp.	Rytidosperma spp.	Wallaby Grass spp.	1.0 x 0.5	140mm
DISTRICT PARK				
ID	Botanical Name	Common Name	Scheduled Size	Pot Size
LoCo	Lomandra confertifolia	Mat-rush	1.0 x 1.5	200mm
LomFil	Lomandra filiformis	Wattle Mat-rush, 'Savanna Blue'	1.0 x 1.5	200mm
LoLo	Lomandra longifolia	Spiny-headed Mat-Rush	1.0 x 1.0	50mm Tube
LoMu	Lomandra multiflora	Many-flowered Mat-rush	1.0 x 1.5	200mm
LITa	Lomandra longifolia 'Tanika'	Spiny-head mat rush, spiky-headed mat-rush, basket gr.	1.0 x 1.5	200mm
PenSet	Pennisetum setaceum 'Rubrum'	Purple Fountain Grass	1.0 x 1.5	200mm
DiRS	Dichondra repens 'Silver Falls'	Kidney Weed 'Silver Falls'	0.1 x 2.0	200mm
BASINS				
ID	Botanical Name	Common Name	Scheduled Size	Pot Size
CaAp	Carex appressa	Tall Sedge	1.0 x 1.0	50mm Tube
FiNo	Ficinia nodosa	knobby club-rush		
JuUs	Juncus usitatus	Common Rush	1.2 x 0.5	50mm Tube
PoLa	Poa labillardieri	Tussock Grass	1.0 x 1.0	140mm
ThAu	Themeda australis/triandra	Kangaroo Grass	1.0 x 0.5	140mm
CrPe	Crinum pedunculatum	Swamp Lily, River Lily	1.2 x 1.2	4.5L
LoLo	Lomandra longifolia	Spiny-headed Mat-Rush	1.0 x 1.0	50mm Tube
ImCy	Imperata cylindrica	Blady Grass	1.0 x 1.5	140mm
AcPa	Acacia parvipinnula	Silver Stem Wattle	5.0 x 3.0	50mm Tube
DaUl	Daviesia ulicifolia	Gorse Bitter Pea	2.0 x 1.0	50mm Tube
GaAs	Gahnia aspera	Rough Saw-sedge	1.0 x 1.5	50mm Tube
PeLi	Persoonia linearis	Narrow Leaved Geebung	3.0 x 2.0	50mm Tube
LeJu	Leucopogon juniperinus	Prickly Bearded Heath	1.0 x 1.0	50mm Tube
GaCl	Gahnia clarkei	Saw Sedge	1.0 x 1.5	Viotube



CONNECTION TO COUNTRY



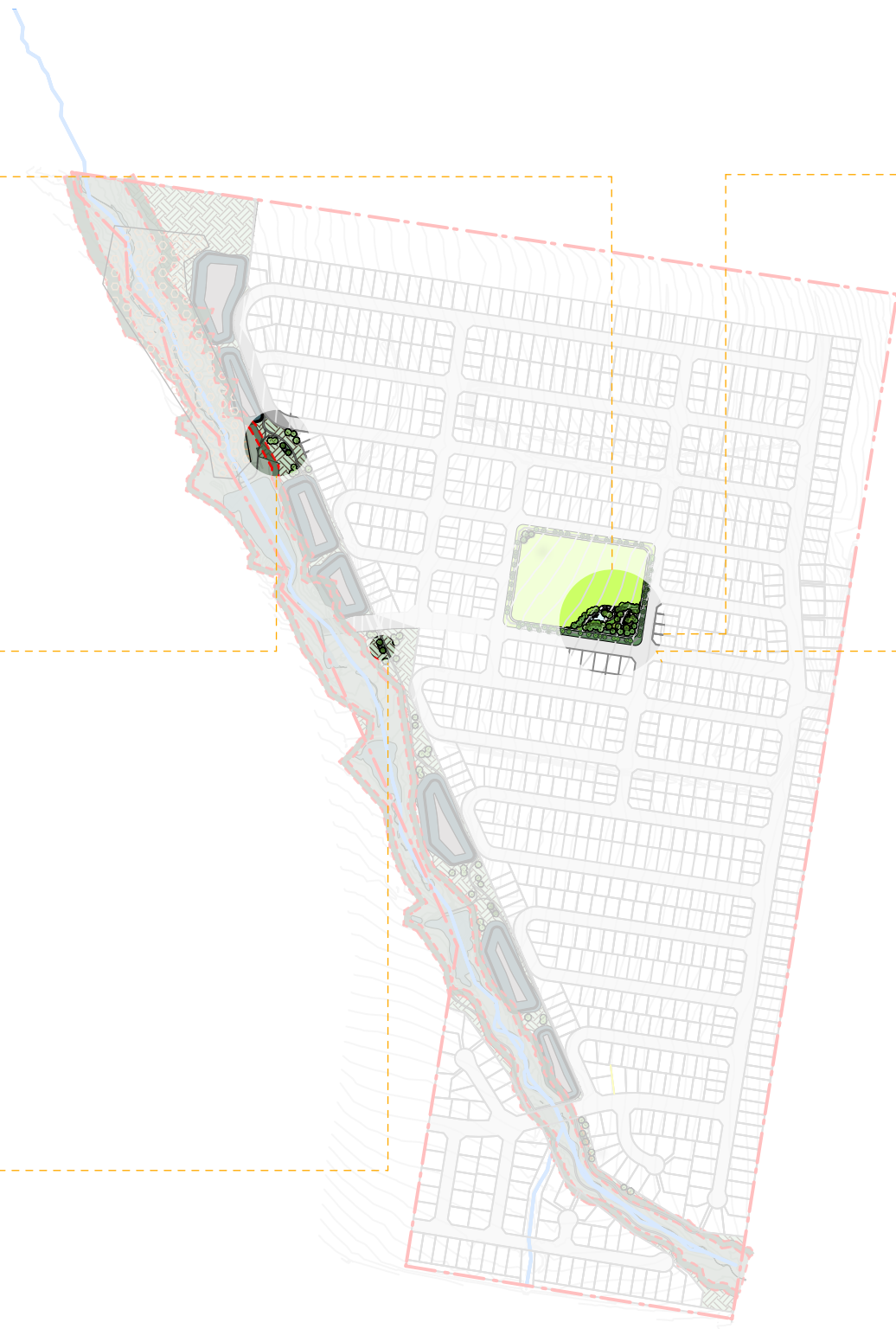
Water movement & Dreamtime stories incorporated into playground theming



Serpentine pathway connections to capture movement and flow to reinforce the connection to Burkes Gully



Endemic mass planting significant to indigenous use such as Lomandra sedges along Burkes Gully



Feature use of basalt as reference to basalt artefacts found on site and their use for thousands of years



Planting of endemic trees including Eucalyptus blakelyi to establish a sense of place and connection to country specific to Burkes Gully

NOTES

Design considerations to incorporate the site's unique connection to Burkes Gully with broader reference to water movement and endemic vegetation within the Tamworth region

Material use and movement design has been incorporated and carefully considered in each component of the landscape design to reach maximum audience in celebration of spatial awareness key to Burkes Gully and further recognition of the site's Connection to Country



